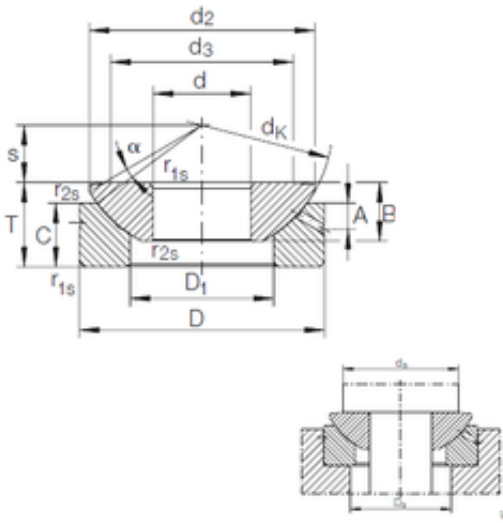




BEARING Driveshaft USA CORP.



35 mm x 90 mm x 22 mm INA GE 35 AX plain bearings

Bearing No. GE 35 AX

Size	35x90x28 mm
Bore Diameter	35 mm
Outer Diameter	90 mm
Width	28 mm
d	35 mm
D	90 mm
T	28 mm
B	22 mm
C	20 mm
d2	84 mm
d3	66 mm
dk	98 mm
r1 min.	1 mm
r2 min.	0,3 mm
A	8 mm
D1	52 mm
S	22 mm
da max	66 mm
Da min	57 mm
Angle	6 °
Weight	1 Kg
Basic dynamic load rating (C)	259 kN

GE 35 AX Bearing 2D drawings and 3D CAD models